

Vidya Bhawan Balika Vidyapeeth Lakhisarai

Arun Kumar Gupta

Class 10th

Subject Biology

Date:- 13.04.21

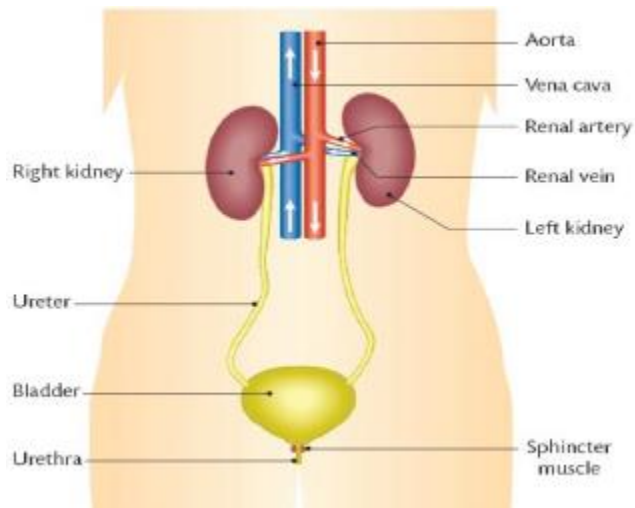
Transportation in plants

- Transportation of water is through xylem tissues
- Transport of water occurs due to transpiration pull, root pressure and difference in pressure gradient.
- Transport of food or translocation takes place through phloem and it requires energy.

Excretion

It involves the removal of harmful metabolic wastes from the body of organisms by various processes.

Excretion in humans



The excretory system consists of- a pair of kidneys, a pair of ureters, a urinary bladder, and a urethra.

- Nitrogenous wastes such as urea and uric acid are removed
- Nephron- basic filtration unit
- Main components of the nephron - glomerulus, Bowman's capsule, renal tube
- The process of Removing of nitrogenous wastes through artificial kidney is called **dialysis**.

